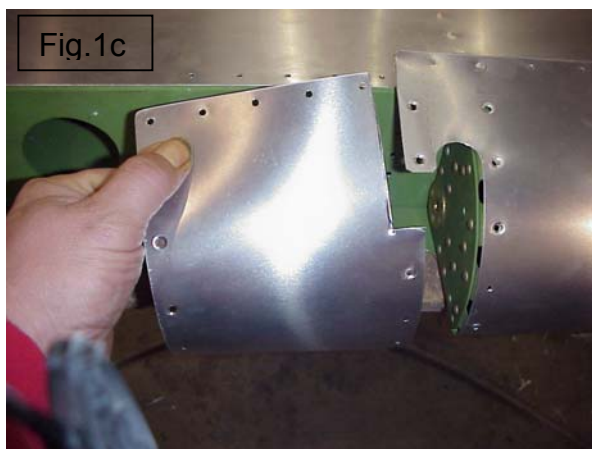
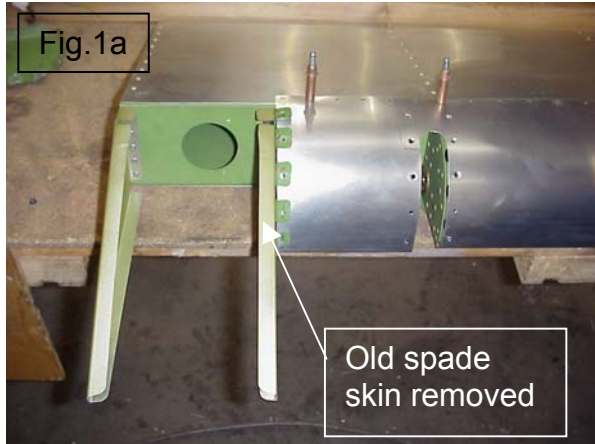


## SUPER REBEL CONTROL ENHANCEMENT MODIFICATION-AILERON

The following modifications have proved successful in lightening stick forces in roll and increasing aileron authority after extensive testing on our 3500 prototype.

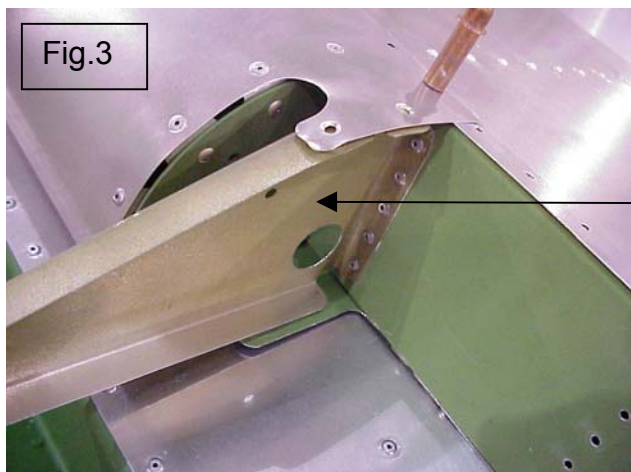
1/ If the aileron is assembled, derivet the spade skin and discard. Derivet the leading edge back to station 13 (Fig. 8.2.1.), and cut this section away (Fig. 1a,b,c).



2/ Remove nose ribs from station 13 and 14 and discard.

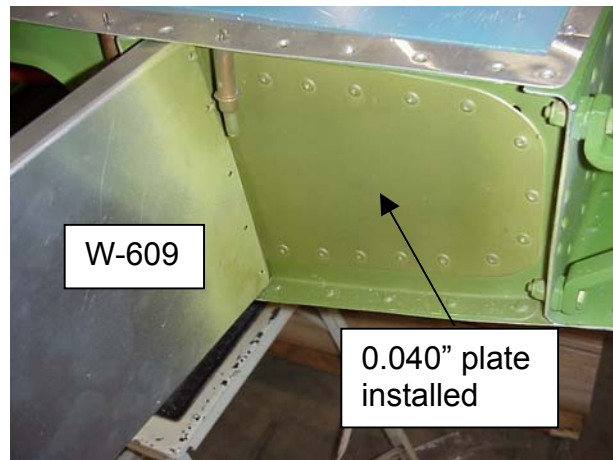
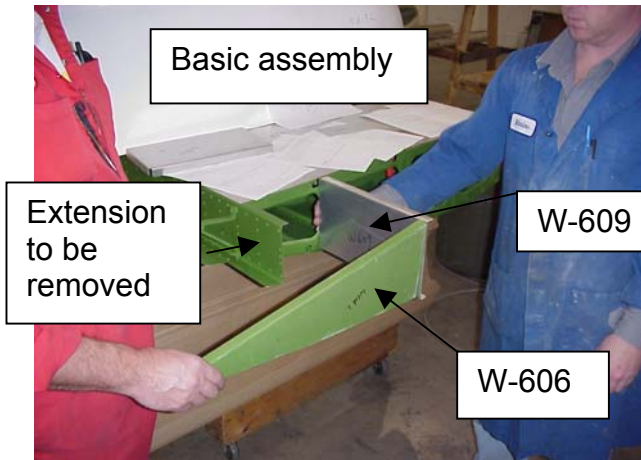
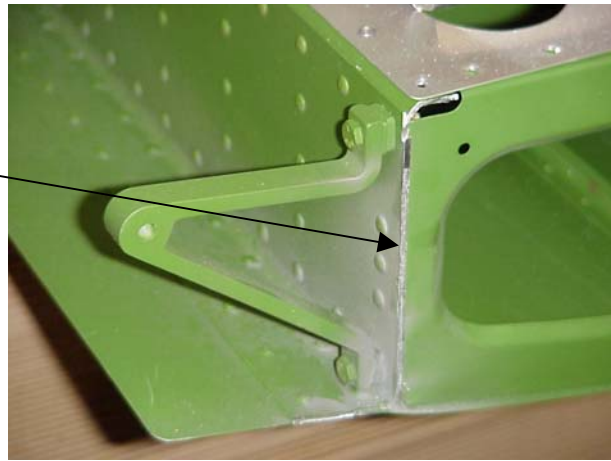
3/ Remove the inboard spade rib, and cut a 1" access hole as you did with the nose rib that was installed at station 13. Fig.2.

4/ Re-install this spade rib at station 13. Fig.3.



Spade rib  
installed at  
station 13  
with 1" hole  
cut (centered  
on tooling  
hole)

5/ Follow the revised chapter 8 and 16 instructions for the spade assembly and wing tip installation.



NOW REFER TO REVISED AILERON (chapter 8) and WING TIP (chapter 16) CHAPTERS