

11.0 Nose Gear Install

- 1) Cleco FUS- 355 doublers to outboard side of the FUS-325 shear webs. Use the pilot holes in FUS-355 as a guide to drill through Fus-325L & R shear webs. Drill the holes circled for FUS-350 to 5/16". Install FUS-355 doublers with 3/16 Avex rivets. Bolt FUS-350 to FUS-325 L&R shear webs with AN5-10A bolts and an AN960-516 washer under an AN365-528 nut (Nut and washer on FUS-350). The longer legs on FUS-350 must point up.
NOTE: When tightening bolts, remember to turn the nut not the bolt. Figure1.

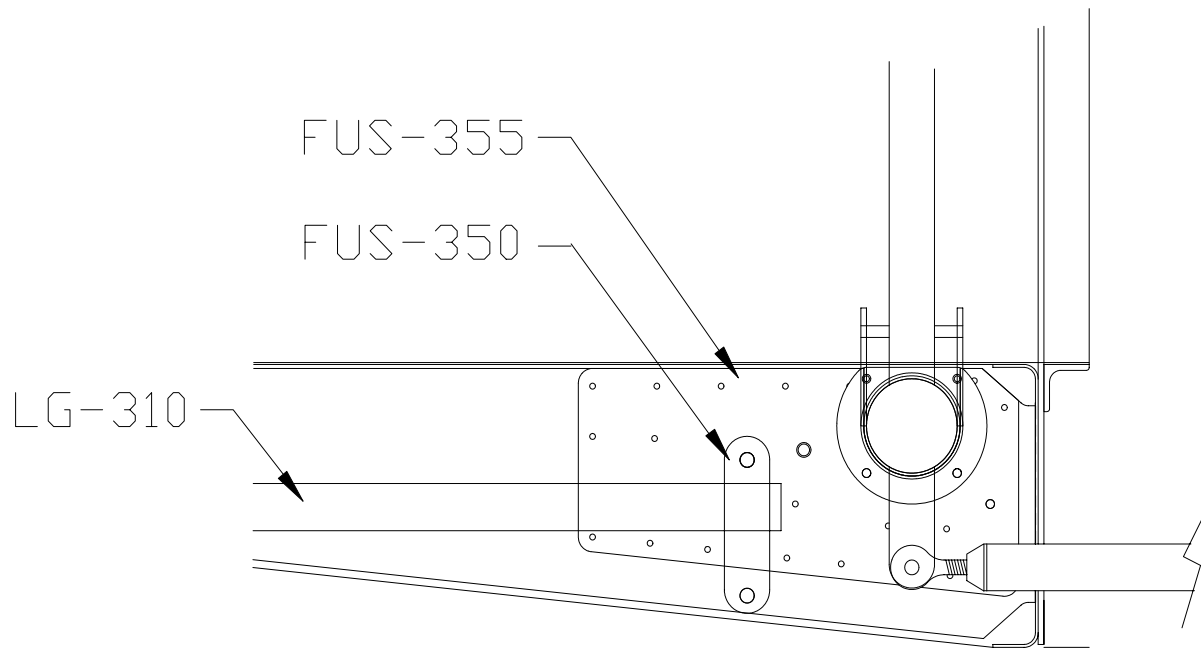


FIGURE 1.

- 2) Cut two lengths of FUS-386 channel 37" long. Draw a centerline down the length of one flange, then using the #40 pilot holes in the middle of the Firewall as a guide, back drill into the centerline. NOTE: If you have already installed the FUS-386 channel across the top of your Firewall you will have to trim out a section of the flange to allow the vertical channels to run over it.
- 3) Cut two pieces of 0.063" from RAWST-25, one to go behind the vertical FUS-386 channels, between the firewall and the channel flanges, and one to act as a spacer between the channel flanges (this spacer will need to be cut in two to run either side of the horizontal FUS-386). Fig. 2. FUS-12 witch's hats will also have to have the top trimmed off. If you have not yet installed FUS-386 or FUS-12, you can install them on the back of the Firewall.
- 4) Make 4 clips from the extra FUS-386 (by removing the flange on one side). Use 6 rivets in the clips to secure the upright channel to the cross channel. Figure 2.
- 5) Drill the bottom four holes to 1/4".

- 6) Install the vertical FUS-386 and 0.063" spacers with a 1" nominal rivet pitch between the holes given.(RV1410, RV-4412 flush rivets in the area where the lower spacer lies under the FUS-348) NOTE: It will be easiest to install the rivets holding the vertical FUS-386 channels from inside the cabin, except in the flush riveted areas.

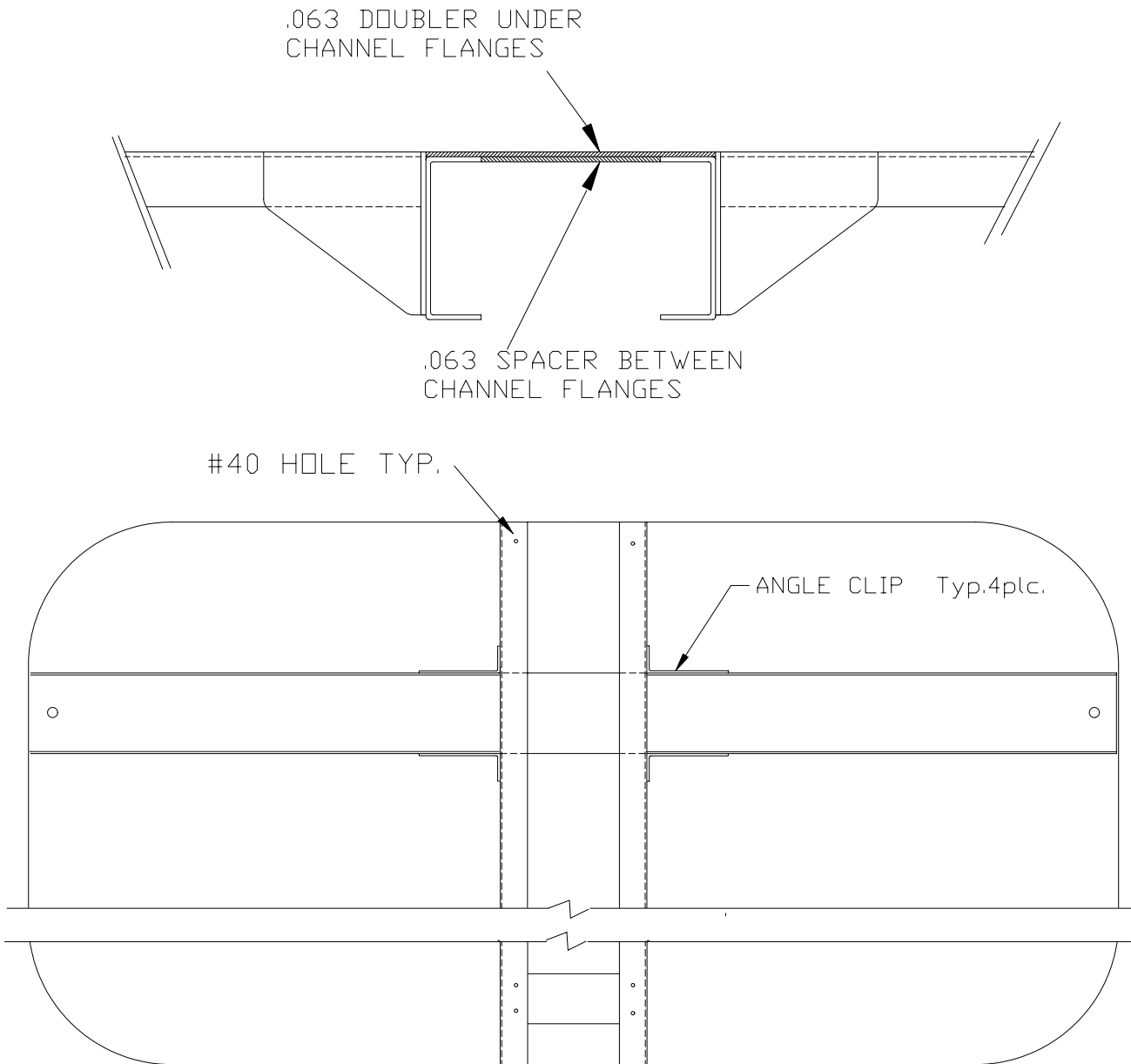


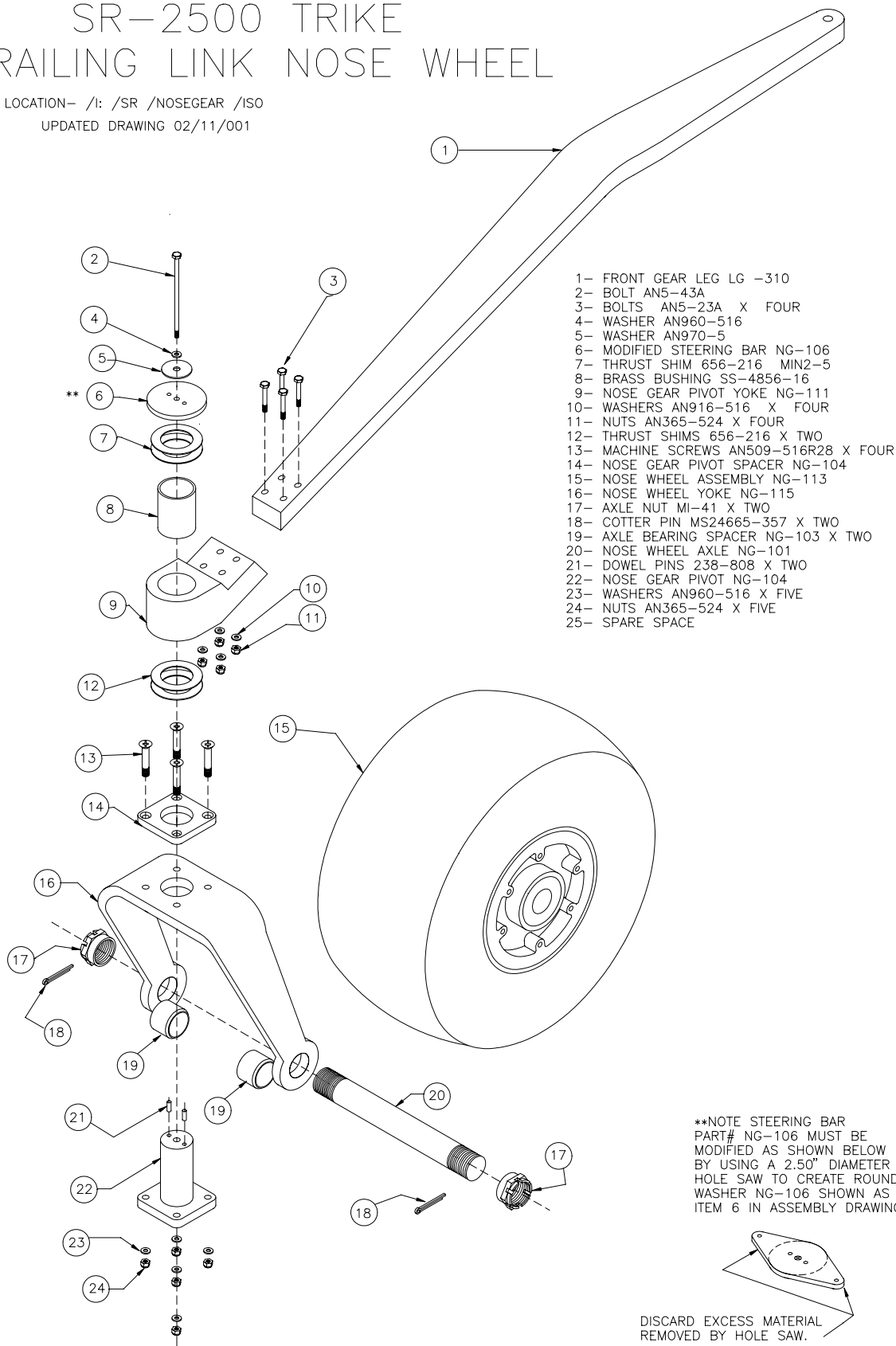
FIGURE 2.

- 7) Use FUS-348 as a guide to drill the two center 1/4" holes also mark and cut out the slot necessary for LG-310 to slide through. Install FUS-348 with six AN4-7A bolts, AN960-416 washers and AN365-528 nuts. Use two AN6-25A bolts to install FUS-349 to FUS-348.

- 8) To install LG-310 you will need to radius the edge of the area that sits in between the two fittings FUS-348 & FUS-349.
- 9) Bolt LG-310 to FUS-350 with an AN7-23A bolt, AN960-716 washer and an AN365-728 nut.
- 10) Use the 3D drawing at the front of this chapter to assemble your Nosewheel.

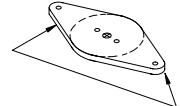
SR-2500 TRIKE TRAILING LINK NOSE WHEEL

FILE LOCATION- /I: /SR /NOSEGEAR /ISO
UPDATED DRAWING 02/11/001



- 1- FRONT GEAR LEG LG -310
- 2- BOLT AN5-43A
- 3- BOLTS AN5-23A X FOUR
- 4- WASHER AN960-516
- 5- WASHER AN970-5
- 6- MODIFIED STEERING BAR NG-106
- 7- THRUST SHIM 656-216 MIN2-5
- 8- BRASS BUSHING SS-4856-16
- 9- NOSE GEAR PIVOT YOKE NG-111
- 10- WASHERS AN916-516 X FOUR
- 11- NUTS AN365-524 X FOUR
- 12- THRUST SHIMS 656-216 X TWO
- 13- MACHINE SCREWS AN509-516R28 X FOUR
- 14- NOSE GEAR PIVOT SPACER NG-104
- 15- NOSE WHEEL ASSEMBLY NG-113
- 16- NOSE WHEEL YOKE NG-115
- 17- AXLE NUT MI-41 X TWO
- 18- COTTER PIN MS24665-357 X TWO
- 19- AXLE BEARING SPACER NG-103 X TWO
- 20- NOSE WHEEL AXLE NG-101
- 21- DOWEL PINS 238-808 X TWO
- 22- NOSE GEAR PIVOT NG-104
- 23- WASHERS AN960-516 X FIVE
- 24- NUTS AN365-524 X FIVE
- 25- SPARE SPACE

**NOTE STEERING BAR
PART# NG-106 MUST BE
MODIFIED AS SHOWN BELOW
BY USING A 2.50" DIAMETER
HOLE SAW TO CREATE ROUND
WASHER NG-106 SHOWN AS
ITEM 6 IN ASSEMBLY DRAWING.



DISCARD EXCESS MATERIAL
REMOVED BY HOLE SAW.

