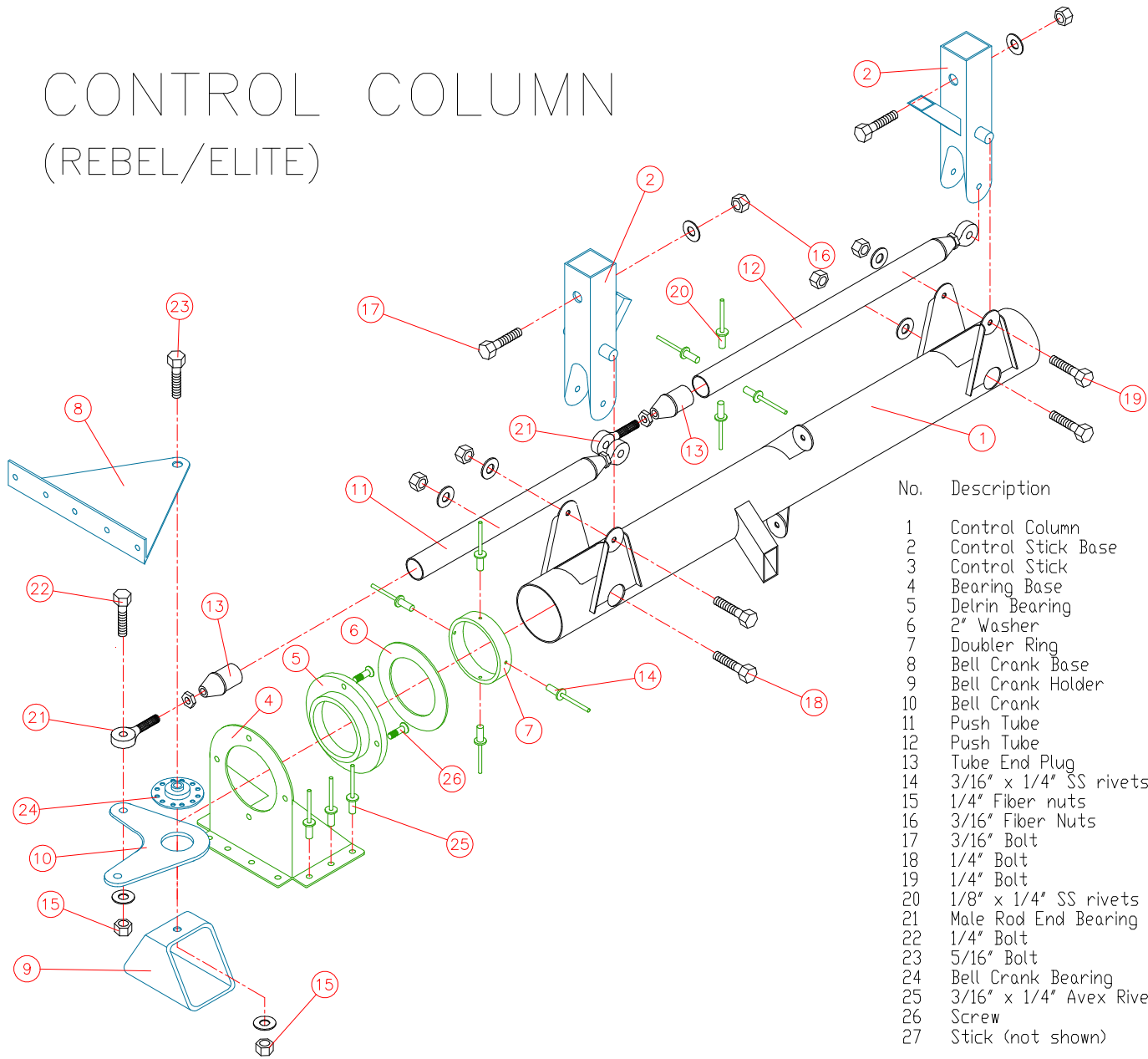
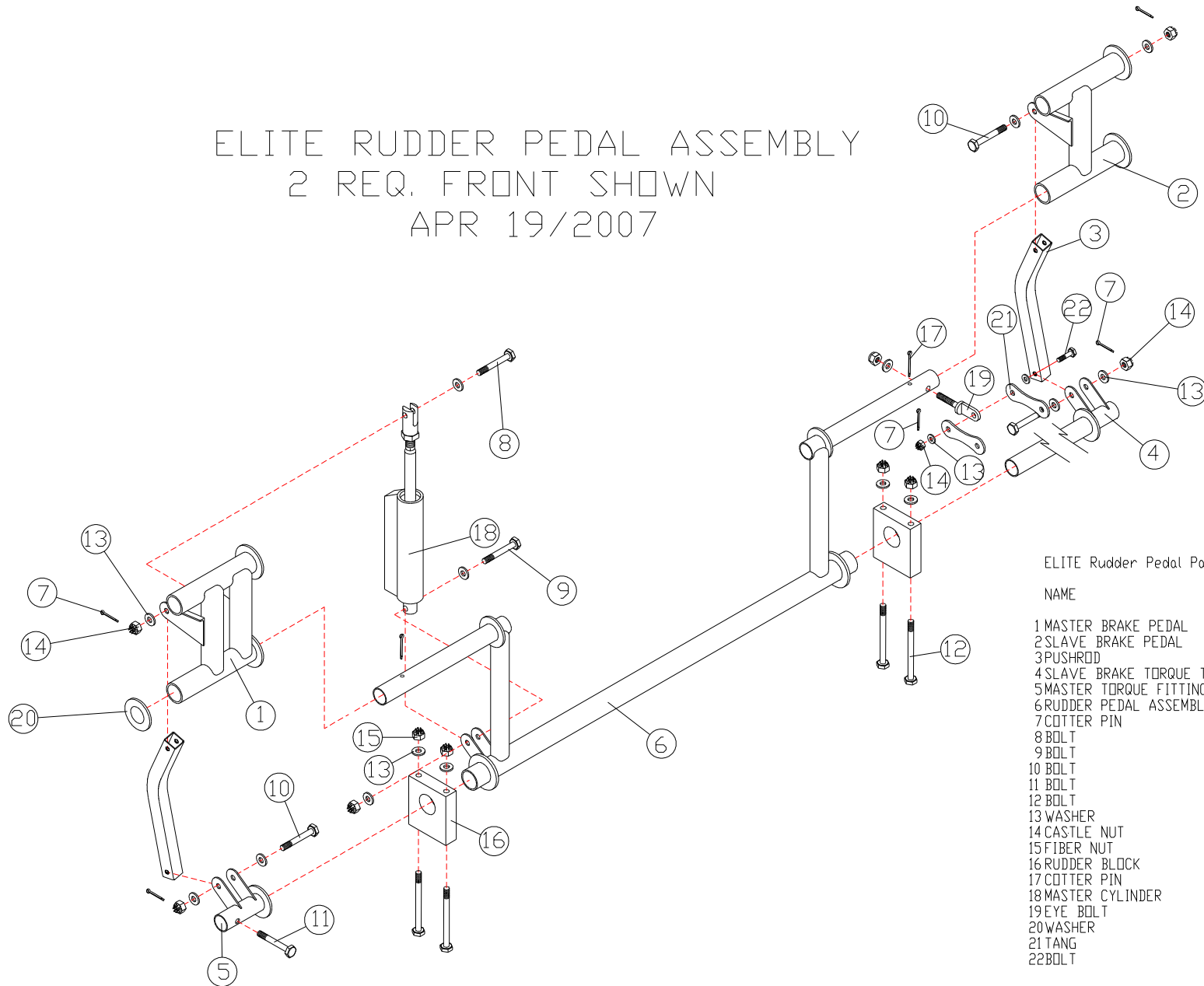


CONTROL COLUMN (REBEL/ELITE)



No.	Description	Part #	Req.
1	Control Column	CC-35-1	1
2	Control Stick Base	CC-36	2
3	Control Stick	CC-5	2
4	Bearing Base	CC-38	2
5	Delrin Bearing	CC-37	2
6	2" Washer	A-M2W	2
7	Doubler Ring	CC-54	2
8	Bell Crank Base	CC-41	1
9	Bell Crank Holder	CC-42	1
10	Bell Crank	CC-47-2	1
11	Push Tube	CC-50	0.4
12	Push Tube	CC-50	0.6
13	Tube End Plug	CC-29	4
14	3/16" x 1/4" SS rivets	RR-5604	8
15	1/4" Fiber nuts	AN365-428	6
16	3/16" Fiber Nuts	AN365-1032	2
17	3/16" Bolt	AN3-14A	2
18	1/4" Bolt	AN4-13A	2
19	1/4" Bolt	AN4-25A	2
20	1/8" x 1/4" SS rivets	RR-5404	16
21	Male Rod End Bearing	HM4M	4
22	1/4" Bolt	AN4-7	1
23	5/16" Bolt	AN5-16	1
24	Bell Crank Bearing	MI-25	1
25	3/16" x 1/4" Avex Rivets	RV-1619	28
26	Screw	AN509-1032R	8
27	Stick (not shown)	(ELITE) CC-5-1	2
		(REBEL) CC-5	2

ELITE RUDDER PEDAL ASSEMBLY
 2 REQ. FRONT SHOWN
 APR 19/2007



ELITE Rudder Pedal Parts List 2-Jun-97

NAME	NO.	AMOUNT
1 MASTER BRAKE PEDAL	RP-15	2
2 SLAVE BRAKE PEDAL	RP-16	2
3 PUSHROD	RP-17	4
4 SLAVE BRAKE TORQUE TUBE	RP-18	2
5 MASTER TORQUE FITTING	RP-19	2
6 RUDDER PEDAL ASSEMBLY	RP-14	2
7 COTTER PIN	MS24665-132	14
8 BOLT	AN3-10	2
9 BOLT	AN3-11	2
10 BOLT	AN3-12	8
11 BOLT	AN3-11A	2
12 BOLT	AN3-22A	8
13 WASHER	AN960-10	48
14 CASTLE NUT	AN310-3	14
15 FIBER NUT	AN365-1032	12
16 RUDDER BLOCK	RP-13	4
17 COTTER PIN	MS24665-357	4
18 MASTER CYLINDER		2
19 EYE BOLT	AN42B-10A	2
20 WASHER	AN960-1016	2
21 TANG	T12-HT4	4
22 BOLT	AN3-5	2

Control Assembly

15.1 Inner Floor

NOTE: Before you can start on the Control installation you must first install the inner floor.

- 1) Draw center lines down the inside flanges of the Cabin Floor Bulkheads.
- 2) Lay the FUS-423 Cabin Floor in place. Cleco it to the FUS-429 Doubler (use the existing #40 holes).
- 3) Check that the floor is centered at the back of the Cabin.
- 4) Drill #40 holes through the Cabin Floor Bulkheads using the pre-punched holes in the Floor Skin. **NOTE:** You will notice there are only two holes per bulkhead. This is enough to hold the Floor in place while you work on the Controls. You won't drill the bulkhead rivet lines until after the Seat Rails have been located. See figure 15.1.1 for layout and locations of parts. Next, install FUS-33 Corner Wraps the same way you did for the Tailcone inner wraps.

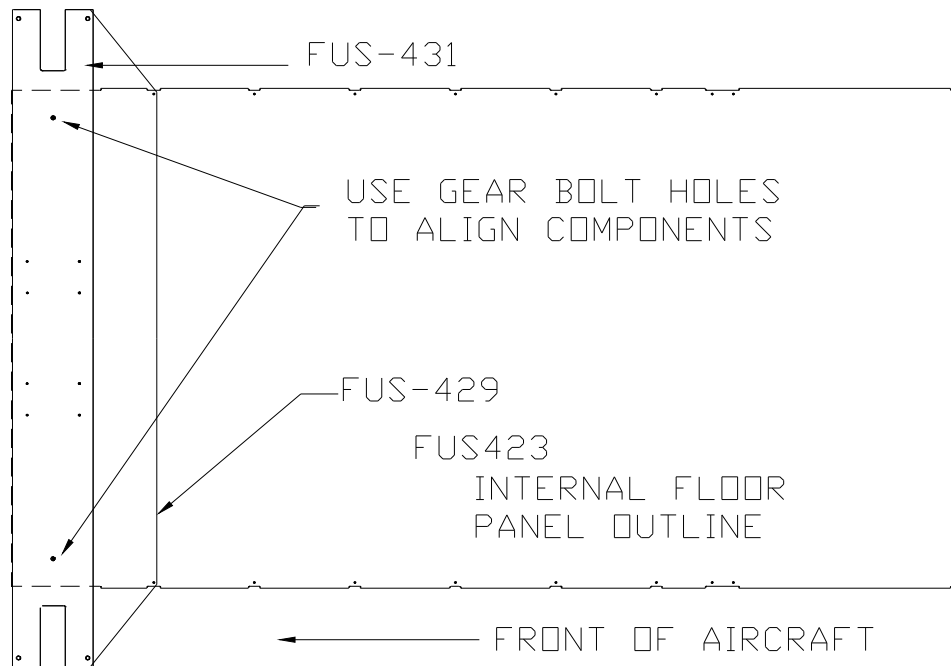


Figure 15.1.1

15.2 Control Sticks

- 1) Bolt Delrin Bearing (CC-37) inside the bearing plates (CC-38) similar to what is done in the wing assembly.
- 2) Install the control sticks (CC-5-1) in the control stick bases (CC-36). Make one left and one right stick. Figure 15.2.1.

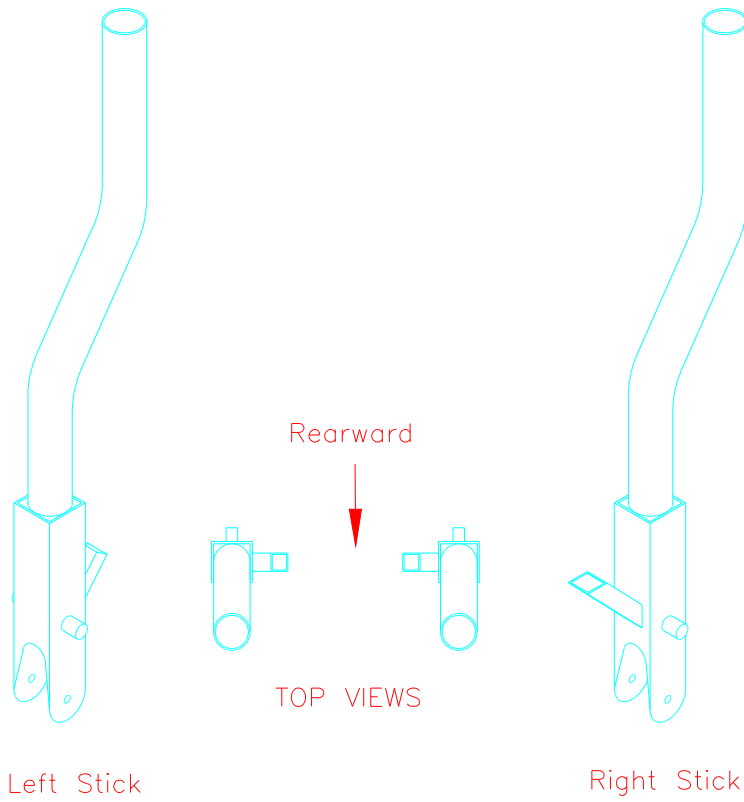


Figure 15.2.1

3) Drill a #11 hole through the control stick base and control stick. Bolt together with AN3-13A bolts, AN960-10 washers, AN365-1032 fiber nuts. Figure 15.2.2.

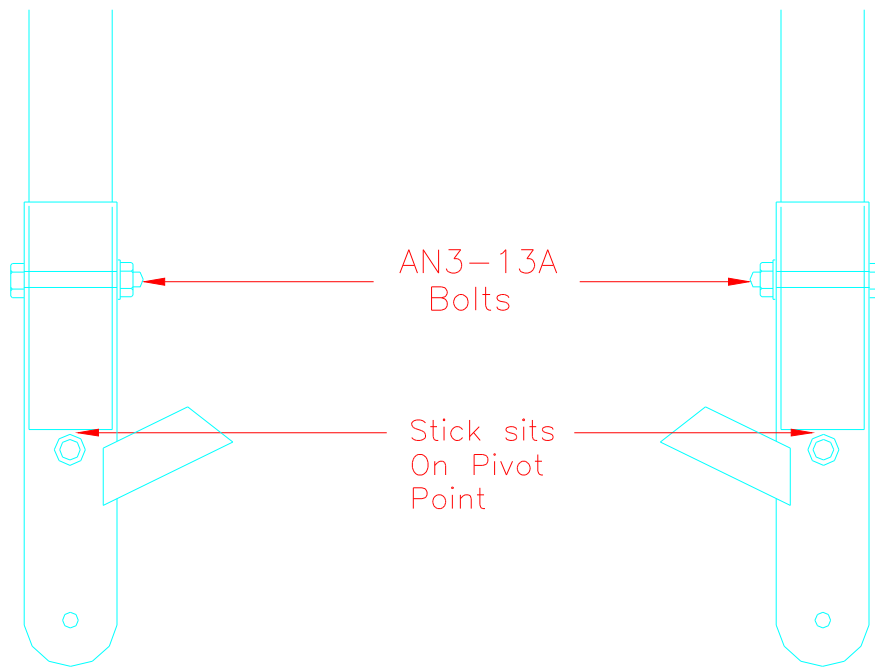


Figure 15.2.2